

The Georges River Floodplain Management Study: a whole of Catchment Approach

Authors:

F Dall'Osso¹, K Sanborn¹, J Theilemann¹, B Tate¹, P Grech², S Molino¹

¹Water Technology Pty Ltd, Sydney, NSW

²GLN Planning, Sydney, NSW

For enquiries contact: FDallOsso@molino-stewart.com.au



64 flood studies, 250 datasets
Reviewed and collated in searchable database showing key information



One-page infographic-summary for each study



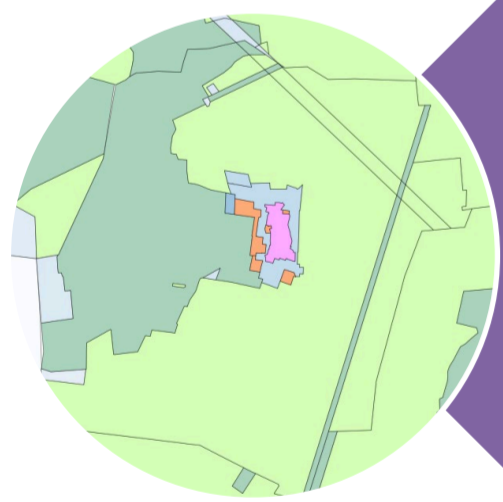
Online mapping with high priority catchments



Guidance and tools for future studies



Review of the existing statutory planning framework relevant to FRM and development assessment issues



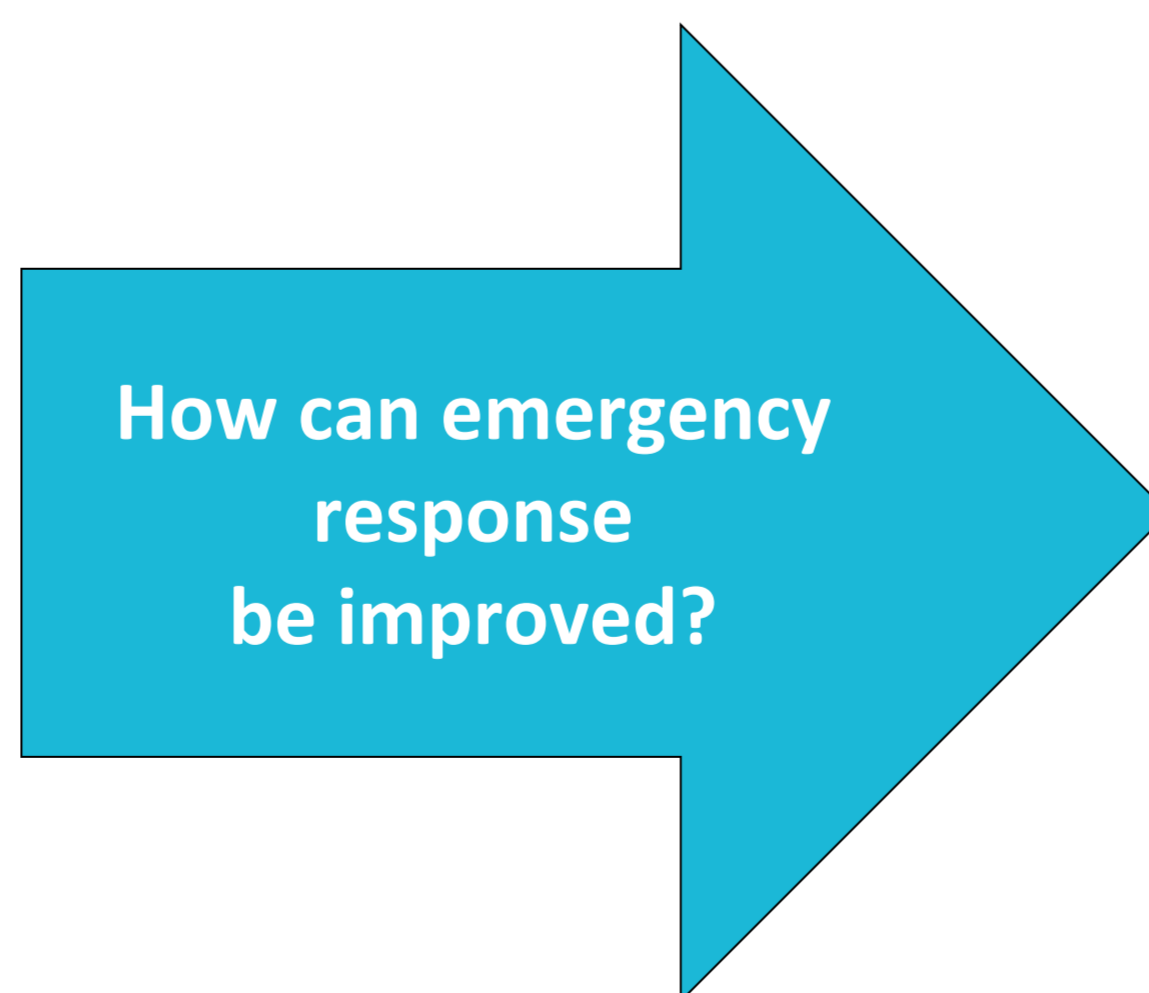
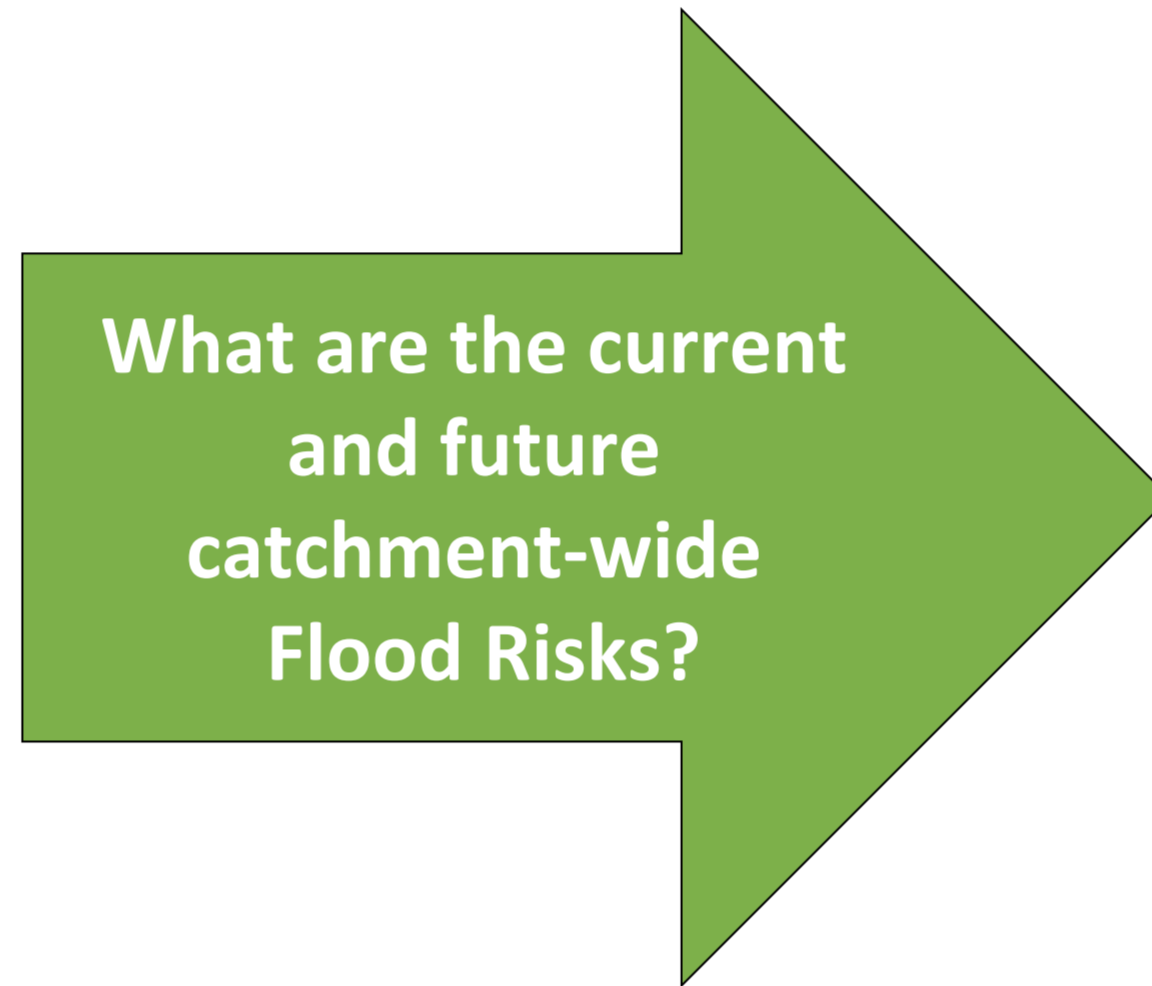
Assessment of compatibility of zoned development potential with flood hazards



Review of potential future flood risks associated with planned urban expansion and renewal



Delivered 16 planning recommendations



Collation, prioritisation and GIS mapping of 24 FRMSPs



Implementation status of approved risk reduction measures



Current and future flood damages



Assessed advantages and impacts of possible catchment-wide flood modification



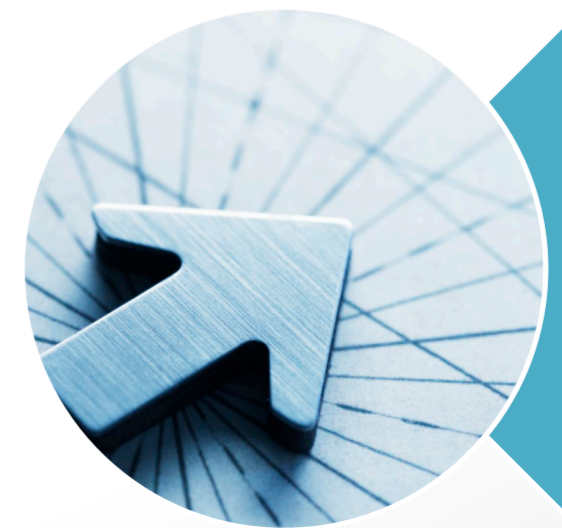
Regional Evacuation Assessment and Mapping for Georges and Woronora rivers



Mapped: evacuation routes (regional and local), cut points, flood islands, bottlenecks, local evacuation destinations



Evacuation capability assessed and areas without sufficient time (or without vehicles) mapped



Produced 11 recommendations to address regional evacuation constraints